

THE OHIO MULTI-BREED FALL SALE



LORAWAE ION POKER
USA 68794372 99%RHA-NA

P8 PTPI
+1616

John S Lora
14094 Garfield Rd
Salem, OH 44460
330-537-3797

PTA +367M# -2F# +11P# 38%R 8/2011
PTA +.8PL# 2.85SCS# -.5DPR# 8%DCE#
PTA +1.77T#+1.85UDC#1.81FLC# 38%R 8/2011

Born: 7/22/2009

\$

Calved 10-4-11
Milking 73# per day

O-BEE ION P9 50K GTPI
USA 137656686 100%RHA-NA TR TV TL TD +1740 G
5-01 90 EE+V 07/15/2006

PTA +899M +1F +28P 90%R 8/2011
PTA +160NM -.12%F +.00%P 100%US
PTA +.4PL 2.88SCS -.1DPR 8%DCE
PTA +2.40T +1.23UDC +2.66FLC 89%R 8/2011

LORAWAE MARSHALL POKEY CTPI
USA 60833508 99%RHA-NA +1489
6-07 88 VVEVE 07/21/2003

PTA -166M -4F -7P 60%R 8/2011
PTA +93NM +.01%F -.01%P
PTA +1.2PL 2.82SCS -.9DPR 8%DCE
PTA +1.14T +2.46UDC +.96FLC 63%R 8/2011

AGE	X	DAYS	MILK	DCRM	%	FAT	%	PRT	DCRC
***	2-03	2	305	20770	95	3.9	809	3.1	648 95
			326	21900	95	3.9	853	3.1	686 95
***	3-05	2	305	27970	95	3.5	974	2.9	817 95
			365	31630	95	3.5	1113	3.0	936 95
***	4-09	2	305	30080	94	3.4	1013	2.8	845 94
***	6-00	2	305	30410	95	3.9	1197	2.9	887 95
			343	32970	95	3.9	1292	2.9	968 95
LIFE			1455	122920		3.7	4499	3.0	3634

MESLAND DUPLEX-ET 50K GTPI
ESP 9201683779 100%RHA-NA TV TL +1529 G
03/27/2000

PTA +142M -27F +14P 98%R 8/2011
PTA -78NM -.12%F +.04%P 3%US
PTA -.9PL 3.11SCS -1.3DPR 6%DCE
PTA +2.84T +1.83UDC +2.19FLC 98%R 8/2011

O-BEE TITANIC IONA-ET IMP GTPI
USA 135551109 100%RHA-NA TL +1756 G
2-09 85 +VGVV 06/17/2004

PTA +1027M +28F +23P 69%R 8/2011
PTA +173NM -.04%F -.03%P
PTA -.2PL 2.90SCS -1.3DPR 10%DCE
PTA +2.65T +1.87UDC +3.24FLC 70%R 8/2011

AGE	X	DAYS	MILK	DCRM	%	FAT	%	PRT	DCRC
***	2-00	2	305	25790	99	3.4	884	2.8	724 99
			365	29990	99	3.4	1020	2.8	849 99

MARA-THON BW MARSHALL-ET 50K GTPI
USA 2290977 100%RHA-NA TV TL +1560 G
5-04 86 VEV+ GM 1/08 03/24/1995

PTA +1258M +21F +25P 99%R 8/2011
PTA +56NM -.09%F -.05%P 95%US
PTA -1.8PL 2.92SCS -2.1DPR 7%DCE
PTA +1.63T +1.35UDC +2.13FLC 99%R 8/2011

LORAWAE RUBENS-RC PATCHES CTPI
USA 60151585 98%RHA-NA +1319
5-02 89 VVV+E 06/30/2001

PTA -1358M -27F -33P 63%R 8/2011
PTA +19NM +.09%F +.03%P
PTA +2.8PL 2.82SCS +.5DPR 9%DCE
PTA +.69T +2.34UDC -.86FLC 66%R 8/2011

AGE	X	DAYS	MILK	DCRM	%	FAT	%	PRT	DCRC
***	2-00	2	305	18180	95	3.9	715	3.0	554 95
			309	18370	95	4.0	727	3.1	561 95
***	3-00	2	305	21570	95	3.9	831	3.1	673 95
			313	21920	95	3.9	847	3.1	686 95
***	4-00	2	305	20610	95	3.9	803	3.1	649 95
			310	20810	95	3.9	812	3.2	656 95
***	5-01	2	305	20730	95	3.9	804	3.1	652 95
			307	20830	95	3.9	808	3.1	655 95

3rd Dam – Lorawae Fred Princess EX 90
4th Dam - Lorawae Mathie Pokadot VG 88

THE OHIO MULTI-BREED FALL SALE



TOPPGLEN FINEST ALEXA
 USA 139319493 100%RHA-NA

P5 PTPI
 +1423 M

Kurt & Rachel Topp
 3954 Congress Rd
 Wooster, OH 44691
 330-262-5562

3-00 81 G+GG+
 MACE YIELD EVALUATION
 PTA -94M -30F -5P 48%R 8/2011
 PTA +51NM -.10%F -.01%P
 PTA +1.8PL 2.98SCS +.6DPR 7%DCE
 PTA +.74T# +.98UDC#1.61FLC# 38%R 8/2011

Born: 7/19/2008

\$
 *** AGE X DAYS MILK DCRM % FAT % PRT DCRC
 2-05 2 267 19740 3.7 733 3.1 620

Calved 10-20-11

PENN-GATE FINEST-ET

50K GTPI
 +1577 G

USA 60540336 100%RHA-NA TV TL
 3-11 88 VVEV 03/04/2002
 PTA -524M -49F -16P 99%R 8/2011
 PTA +145NM -.12%F +.00%P 62%US
 PTA +4.0PL 2.68SCS +1.3DPR 7%DCE
 PTA +1.68T +2.01UDC +2.34FLC 98%R 8/2011

TOPPGLEN PRIDES BEST AMY

CTPI
 +1089

USA 138006251 100%RHA-NA
 2-06 77 G++GG 09/01/2006
 PTA +12M -31F -8P 55%R 8/2011
 PTA -202NM -.12%F -.03%P
 PTA -1.4PL 3.22SCS -.9DPR 7%DCE
 PTA -.21T -.05UDC +.87FLC 52%R 8/2011
 *** AGE X DAYS MILK DCRM % FAT % PRT DCRC
 1-10 2 305 22340 98 3.0 677 2.8 625 99
 365 25590 98 3.1 781 2.8 723 99
 *** 3-01 2 305 19850 99 3.2 631 3.0 590 99
 331 20820 99 3.2 659 3.0 617 99

REGANCREST ELTON DURHAM-ET

50K GTPI
 +1601 G

USA 2250783 100%RHA-NA TR CV TL
 7-06 90 EEEV GM 8/01 03/13/1994
 PTA -220M -32F +7P 99%R 8/2011
 PTA +30NM -.09%F +.05%P 82%US
 PTA -.2PL 2.89SCS +.3DPR 6%DCE
 PTA +2.46T +2.30UDC +2.22FLC 99%R 8/2011

PENN-GATE SKYCHIEF FINESSE

IMP GTPI
 +1460 G

USA 15790548 100%RHA-NA
 9-02 95 EEEE 3E DOM 07/23/1995
 PTA -868M -6F -11P 91%R 8/2011
 PTA +50NM +.10%F +.06%P
 PTA +2.5PL 2.78SCS -.4DPR 10%DCE
 PTA +1.47T +1.38UDC +.65FLC 89%R 8/2011
 * AGE X DAYS MILK DCRM % FAT % PRT DCRC
 3-09 2 305 28030 95 4.3 1203 3.4 957 95
 * 4-09 2 305 27460 94 4.9 1351 3.2 883 94X
 * 8-00 2 305 23600 93 5.6 1331 3.2 765 93X
 * 9-00 2 365 36760 95 3.8 1386 3.2 1158 95X
 LIFE 2245 161510 4.5 7311 3.3 5285

TOPPGLEN PRIDES BEST

50K GTPI
 +1505 G

USA 135500626 100%RHA-NA TV TL
 3-05 90 EEEV 02/23/2004
 PTA +538M -3F +22P 96%R 8/2011
 PTA -11NM -.09%F +.02%P 100%US
 PTA -2.3PL 3.20SCS -1.5DPR 7%DCE
 PTA +1.50T +1.71UDC +2.58FLC 91%R 8/2011

TOPPGLEN EMORY AMANDA

CTPI
 +868

USA 130873778 100%RHA-NA
 2-10 76 GGGG 02/02/2001
 PTA -677M -59F -38P 63%R 8/2011
 PTA -301NM -.13%F -.07%P
 PTA +.7PL 3.12SCS -.6DPR 8%DCE
 PTA -.63T -.55UDC +.15FLC 59%R 8/2011
 * AGE X DAYS MILK DCRM % FAT % PRT DCRC
 2-02 2 301 20680 100 3.2 656 2.8 579 100
 NON 4-03 2 305 23050 3.2 742 2.7 619
 NON 5-06 2 248 20540 3.2 652 2.7 547

3rd Dam Ladacres Bell Abi-ET VG88 DOM
 4th Dam Ladacres Ann Tony VG87 DOM
 5th Dam Ladacres Matt Chief Ann VG85
 6th Dam Ladacres Fond Carolyn VG85

THE OHIO MULTI-BREED FALL SALE



TOPPGLEN TALENT AVALON
 USA 139701609 100%RHA-NA
 2-08 83 +V+GV

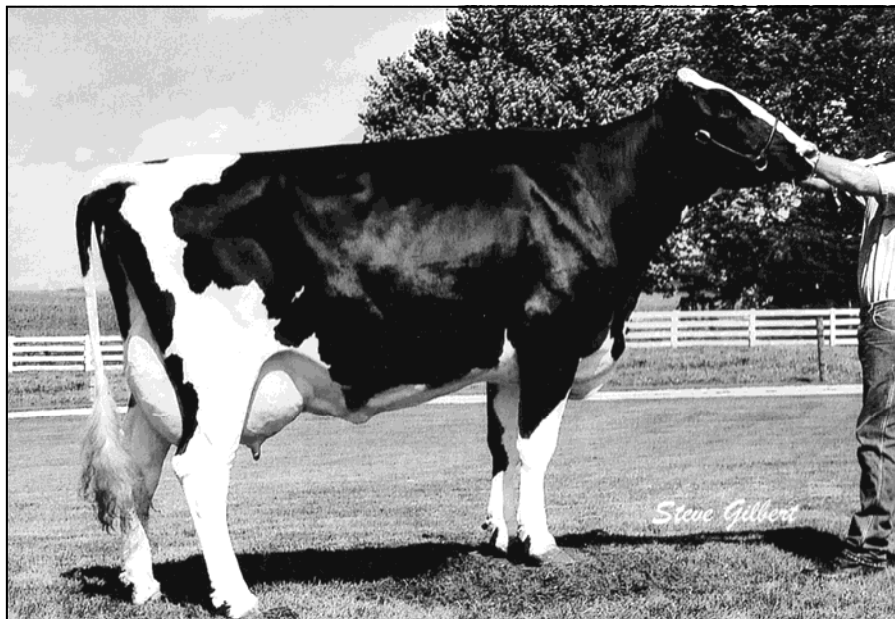
PTPI
 +1375

PTA -213M -28F -3P 47%R 8/2011
 PTA -34NM -.08%F +.01%P
 PTA +1.1PL 3.16SCS -1.2DPR 8%DCE
 PTA +1.62T#+1.61UDC#+1.30FLC# 38%R 8/2011

Kurt & Rachel Topp
 3954 Congress Rd
 Wooster, OH 44691
 330-262-5562

Born: 11/10/2008

\$



Due 3/19/12 to 94H13666
Scientific Destry-ET-RC

Toppglen Emory Aurora EX90
 Granddam of Lot #109

LADINO PARK TALENT-IMP-ET 50K GTPI
 AUS 930377 100%RHA-NA RC TV TL +1433 G
 03/31/1998

PTA -246M -30F +4P 99%R 8/2011
 PTA -22NM -.08%F +.04%P 15%US
 PTA +2.4PL 3.18SCS -2.2DPR 10%DCE
 PTA +2.09T +2.37UDC +.99FLC 99%R 8/2011

MAUGHLIN STORM-ET 50K GTPI
 CAN 5457798 100%RHA-NA B/R TV TL +1437 G
 CAN EX GM 8/04 08/26/1991

MARKWELL LEADER ROSE-ET IMP GTPI
 USA 15804313 100%RHA-NA RC +909 G
 6-01 91 EEVE 2E 03/14/1995

TOPPGLEN MAGICAL AVA CTPI
 USA 138006336 100%RHA-NA +1418 M
 2-05 86 VVV+V 10/28/2006

MACE YIELD EVALUATION
 PTA -138M -18F -1P 51%R 8/2011
 PTA +22NM -.05%F +.01%P
 PTA +.1PL 3.10SCS +.1DPR 5%DCE
 PTA +1.14T +.84UDC +1.61FLC 53%R 8/2011

AGE	X	DAYS	MILK	DCRM	%	FAT	%	PRT	DCRC	
***	2-00	2	305	18080	99	3.7	676	3.0	548	99
			365	20820	99	3.8	783	3.1	639	99

MAINSTREAM MAGICAL-ET 50K GTPI
 USA 128749834 100%RHA-NA TV TL TY +1511 G
 11/01/1999

PTA +94M -11F +24P 99%R 8/2011
 PTA +157NM -.05%F +.08%P 25%US
 PTA -.4PL 3.08SCS +.4DPR 4%DCE
 PTA +.44T +.18UDC +1.63FLC 98%R 8/2011

TOPPGLEN EMORY AURORA CTPI
 USA 130402503 100%RHA-NA +1315
 7-04 90 EEVV 2E 09/24/2000

PTA +86M -11F -8P 61%R 8/2011
 PTA -70NM -.05%F -.04%P
 PTA +.0PL 3.06SCS -.6DPR 7%DCE
 PTA +1.11T +.37UDC +1.14FLC 58%R 8/2011

	AGE	X	DAYS	MILK	DCRM	%	FAT	%	PRT	DCRC
*	1-11	2	305	22680	100	3.4	776	3.0	690	100
***	8-00	2	224	16640		4.1	678	2.9	481	
NON	4-08	2	305	29430		3.9	1144	2.7	789	
NON	6-01	2	305	27590		3.4	939	2.9	792	
				325	28860		3.4	980	2.9	832

3rd Dam Toppglen Rudolph Auralee VG88 GMD DOM
4th Dam Toppglen Tesk Aislynn VG85 GMD